




2023

IMPACT REPORT




Amplify GR believes that everyone deserves to live in a strong neighborhood that widens pathways to prosperity for all neighbors. We are rooted in Boston Square and Madison Square and proudly work collaboratively with neighbors every day at the intersection of economic opportunity, mixed-income housing, birth-to-career education and community wellness.


FOUR PILLARS OF WORK, ONE COMMUNITY.




ECONOMIC
OPPORTUNITY



MIXED-INCOME
HOUSING



BIRTH-TO-CAREER
EDUCATION



COMMUNITY
WELLNESS

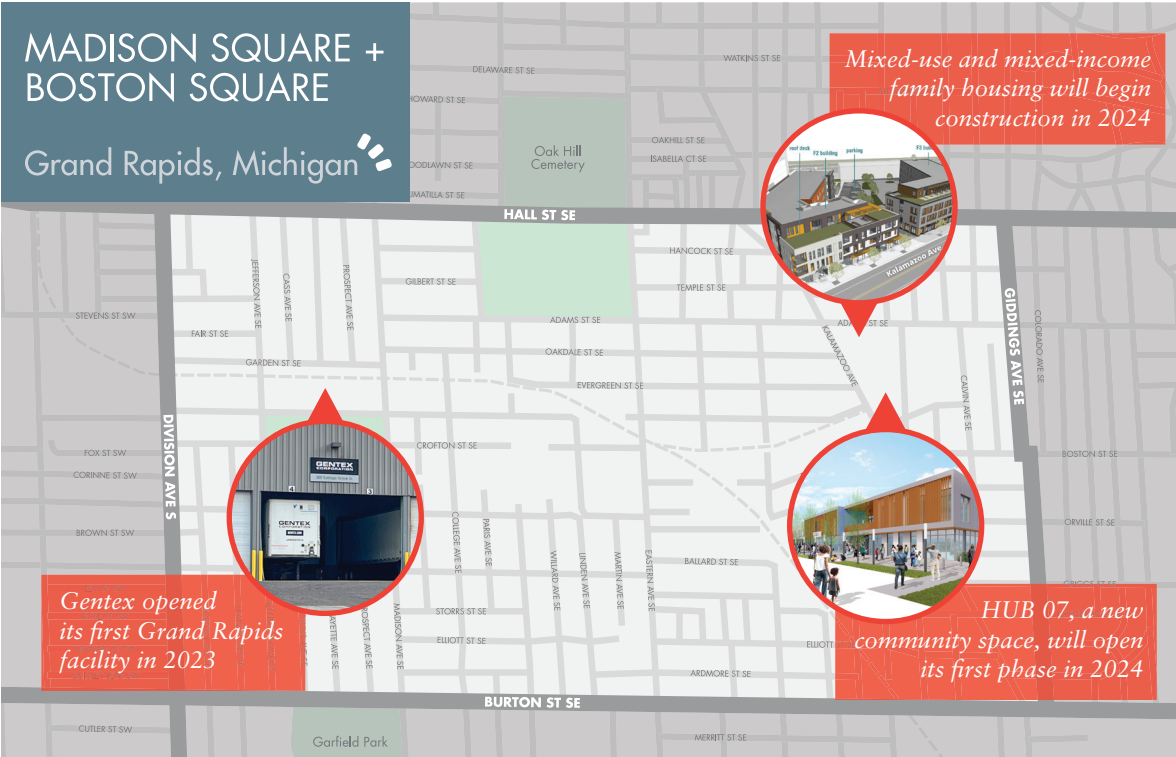
MADISON SQUARE +
BOSTON SQUARE

Grand Rapids, Michigan

Mixed-use and mixed-income family housing will begin construction in 2024

Gentex opened its first Grand Rapids facility in 2023

HUB 07, a new community space, will open its first phase in 2024





ECONOMIC OPPORTUNITY

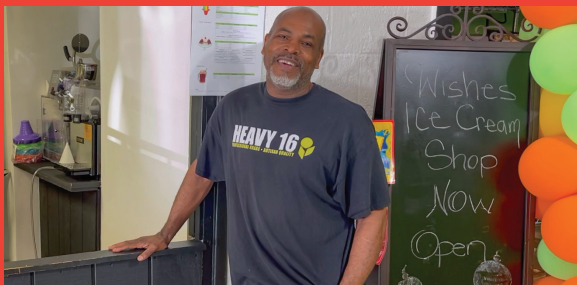
14

new food entrepreneurs joined Kzoo Station with eight entrepreneurs from 49507 and 11 who identify as BIPOC



\$185,163

spent by AGR with BIPOC and women-owned businesses in 49507 to strengthen the community's economic infrastructure



40

new jobs were added by AGR employer partners, with a total of 205 jobs to date, bringing economic opportunity closer to home for neighbors

\$30,000

invested in the interior/exterior of three businesses through the Business Strong pilot program with an additional \$30,000 leveraged from the City of Grand Rapids' façade improvement grant program

\$18.32

average starting wage with AGR employer partners that increases availability to good-paying jobs and healthcare benefits for families in the neighborhood

AMPLIFY GR EMPLOYER PARTNERS

MCPC | Gentex | R&R Mechanical | Shiny Diamond | 2Gen | Balloonafied | Building Bridges | ThundaCats | NaturaShield | Rising Grinds | SKG



MIXED-INCOME HOUSING



80%

of Neighborhood Strong grants were given to legacy neighbors – people who have lived in the community for 20+ years

25

critical repairs were made to area homes through the Neighborhood Strong program to minimize displacement in the neighborhood, bringing the total number of homes repaired to 205 since 2018



10

partnership organizations joined a new advisory committee to co-create a vision for the future housing units at Adams Park Apartments



BIRTH-TO-CAREER EDUCATION



15

Dickinson Elementary School students sponsored to attend STEM Greenhouse's summer Sankofa program to provide additional access to out-of-school learning opportunities



400

students received \$500 scholarships for educational enrichment via a partnership with Outschool.org



“This scholarship money gave me more opportunity and less guilt to be able to pour back into my kids.”

*Emily McClain,
Outbridge AGR program
parent participant*



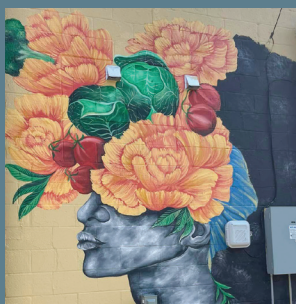
32

Amp the Good grants totaling \$32,000 were given to neighbors to implement their community-building ideas back into the neighborhood

1,000+

neighbors were welcomed at four community events that built neighborhood pride, uplifted neighbor priorities, celebrated a new community hub and nurtured children's love of learning

- 3rd Annual Boston Square Community Tree Lighting
- Amp the Good: A Community Meal
- Raise the Roof event for HUB 07
- Outbridge AGR



3

projects facilitated by the Art Amplified work group included two new murals commissioned by neighborhood artists, plus the "Name That Hub" process, which finalized a new name and logo for the community hub – HUB 07

\$769,756

spent by AGR with nonprofit community partners for grants, programs, ideas and qualified material needs that support neighbors



STAFF

Jon Ippel	Danielle Williams
Latesha Lipscomb, JD	Bethany Underwood
Patrick Johnson Jr.	Jenny Luth
Amy Knappe	Contale Tolbert

BOARD OF DIRECTORS

Kenyatta Brame	Andrea Owens
Ben Emdin	Bing Goei
Bruce Osterink	Father Jose Quintana
Maria DeVos	

NEIGHBORHOOD ADVISORY COUNCIL

Andrea Owens	Sheena Walls
Tyreece Guyton	Kiara Baskin
Burl McLiechey	Loretta Crawford
Robert Womack	Elyse Greene
Joan Huyser-Honig	Esan Sommersell
Maxine Adams	Denise Rolland
Graceshawn Bracey	Shavonna Richardson
Jenny Luth	

WORK GROUPS

Laassah	Jenny Luth
Taylor-Marshall	Tyreece Guyton
Alfield Reeves	Diane Perry
Esan Sommersell	

Amplify GR is rooted in the local community.

But we are also a leader in the national **Purpose Built Communities** movement, a network of 28 communities around the country committed to making holistic investments in defined neighborhoods.

We take the best of national research and learnings and empower local leaders to create thriving neighborhoods here in southeast Grand Rapids.

2024 will be a year of construction and growth.

Follow the progress at **bostonsquaregr.org**

and support the work by volunteering or donating at

amplifygr.org